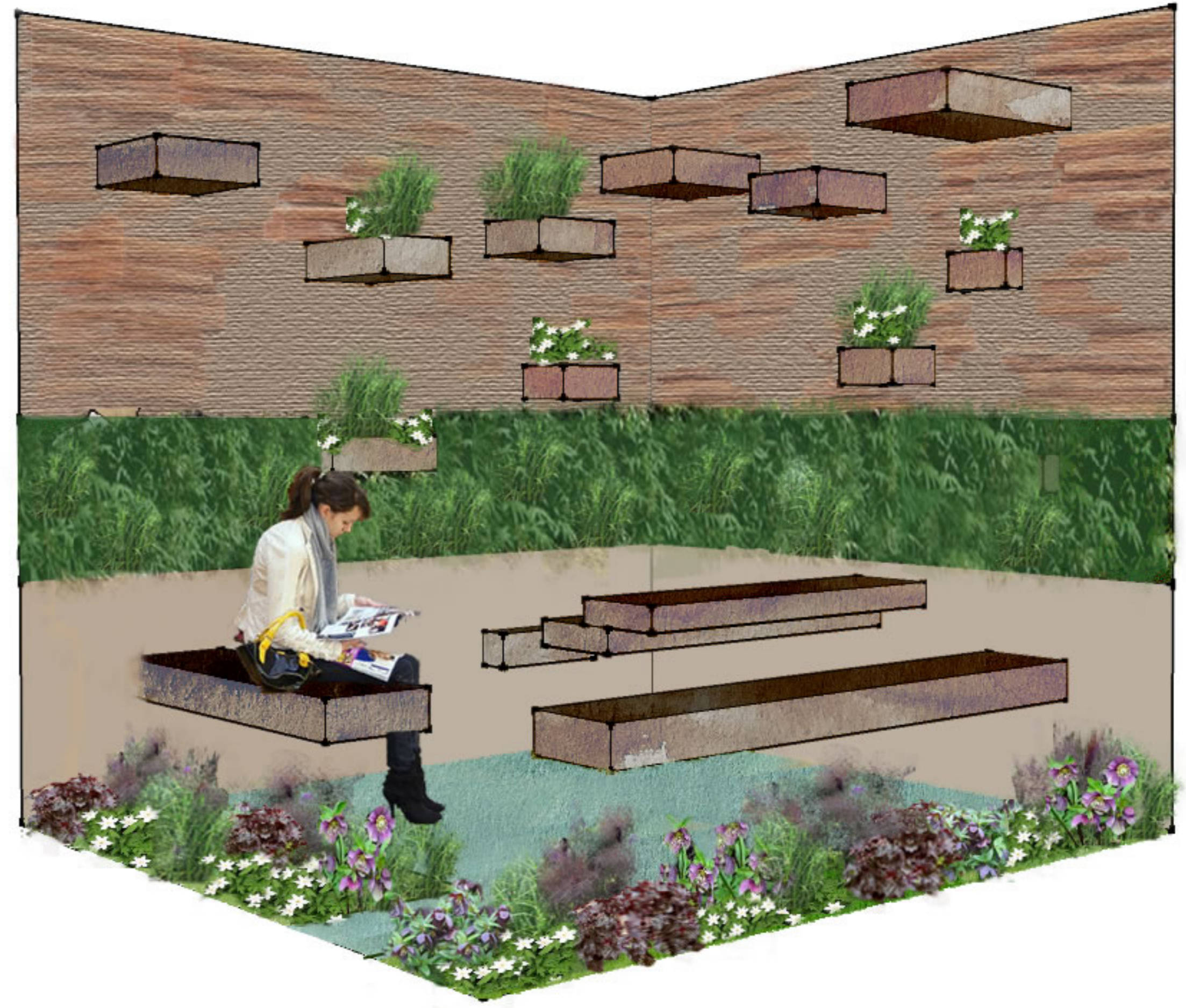


List of suppliers:

Planting: Coblands, Crocus.
Green wall: Scotscape Ltd, Sempergreen vertical systems.
Glass floor panels: Hallmark glass & glazing Ltd.
Wood wall, furniture: Spooners logs. jewson.

Floating shelf like wooden elements in variable random sizes and positions, Some of them planted with ornamental evergreen grasses and *Anemone nemerosa*.



Green living wall is constructed from fern like plants and evergreen grasses.

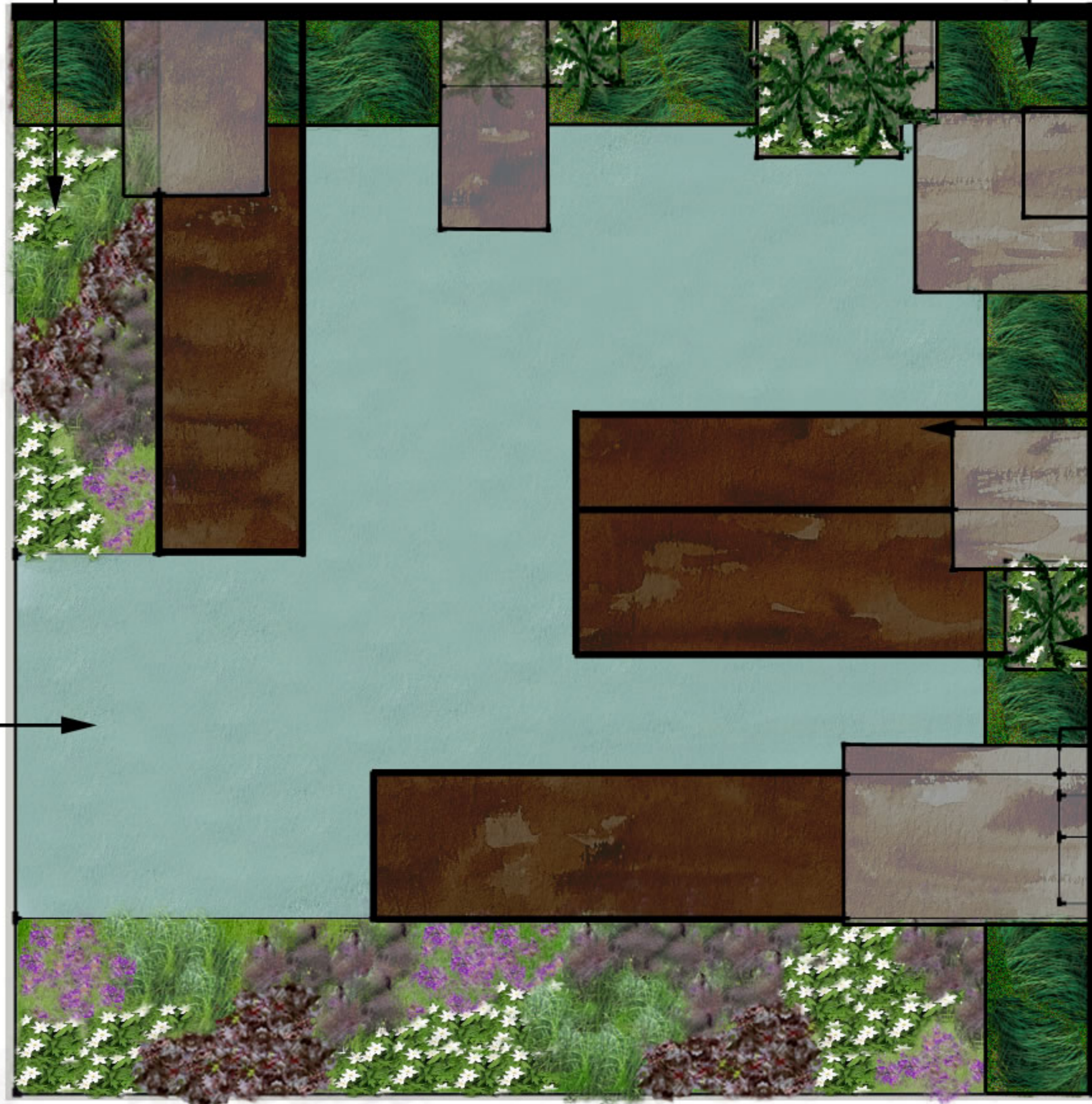
Platform table and benches placed for functional aspect of the garden, colour and wood type matches the decorative part. This sitting area could sit up to five people comfortably.

Graduate Garden
Landscape Exhibition 2012
at Olympia

Design by: Daniela Krasnanova
& Amelie Barthel

The planting is composed of harmonious colour which fits with the space. The plants are carefully selected for a spring planting. The *Anemone numerosa* will be used as a ground cover as well as the contrasting purple ground cover of the *Heuchera purpurea* 'White Pearls'. To harmonize those strong colours we have selected hairy plants such as *Foeniculum vulgare* 'Purpureum' and *Miscanthus* as well as pink flowering plants such as *Helleborus x hybridus* 'Picotee'.

The glass surface on the ground gives light and a calming effect.



The smoothness of the green wall creates a dramatic contrast to the textural rustic wood wall.

The upper side of the wall is made of cut firewood. These unexpected materials bring a strong and warm atmosphere with its tone variation.

To harmonize the wood wall the benches and tables are also made of wood popping up from the wall.

Planks of various sizes are coming out of the wall to add more proportion.

Graduate Garden
Landscape Exhibition 2012
at Olympia

Design by: Daniela Krasnanova
& Amelie Barthel